

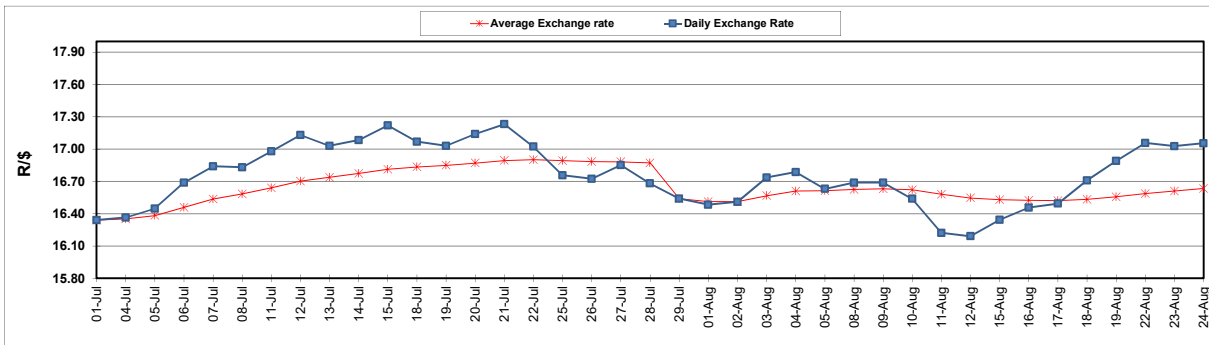
	PETROL 95 ULP	PETROL 93 ULP & LRP	DIESEL 0.05%	DIESEL 0.005%	ILL. PAR.
GAUTENG PUMP PRICE (SA c/l) AS FROM 03/08/2022	2,542.000	2,499.000	-	-	-
WHOLESALE PRICE (SA c/l) AS FROM 03/08/2022	-	-	2,452.440	2,461.840	1,842.288
SINGLE NATIONAL MAXIMUM RETAIL PRICE	-	-	-	-	2,431.000
BASIC FUEL PRICE - 24/08/2022 (SA c/l)	1,321.861	1,294.788	1,737.409	1,761.660	1,732.537
PRESS RELEASE CONTRIBUTION TO BFP 03/008/2022 - 24/08/2022 (SA c/l)	1,482.410	1,439.410	1,600.630	1,610.030	1,624.128
UNIT OVER/(UNDER) RECOVERY - 24/08/2022 (SA c/l)	160.549	144.622	(136.779)	(151.630)	(108.409)
AVERAGE BASIC FUEL PRICE 29/07/2022 - 24/08/2022	1,283.832	1,256.122	1,485.618	1,504.785	1,520.477
AVERAGE UNIT OVER/(UNDER) RECOVERY 29/07/2022 - 24/08/2022	231.262	215.972	140.749	131.455	126.388

ANALYSIS MOVEMENT OF AVERAGE OVER/(UNDER) RECOVERY

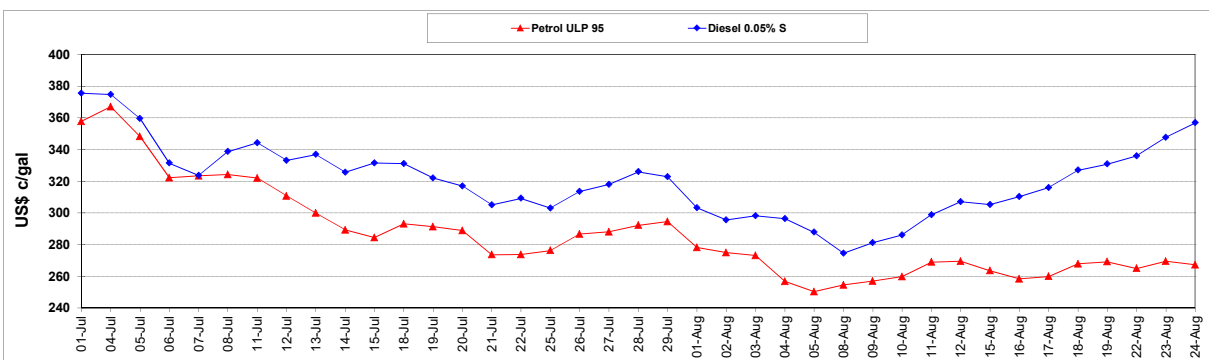
	PETROL 95	PETROL 93	DIESEL 0.05%	DIESEL 0.005%	ILL. PAR.
- MOVEMENT IN INTERNATIONAL PRODUCT PRICES	212.830	197.938	119.420	109.852	104.559
- MOVEMENT IN EXCHANGE RATE	18.432	18.034	21.329	21.604	21.829
AVERAGE UNIT OVER/(UNDER) RECOVERY 29/07/2022 - 24/08/2022	231.262	215.972	140.749	131.455	126.388

R/\$ EXCHANGE RATE - (R/\$17.0525 - 24/08/2022)

EXCHANGE RATE USED IN BASIC FUEL PRICE



INTERNATIONAL PRODUCT PRICES OF BASKET USED IN BASIC FUEL PRICE



BASIC FUEL PRICE IN SA CENTS PER LITRE

